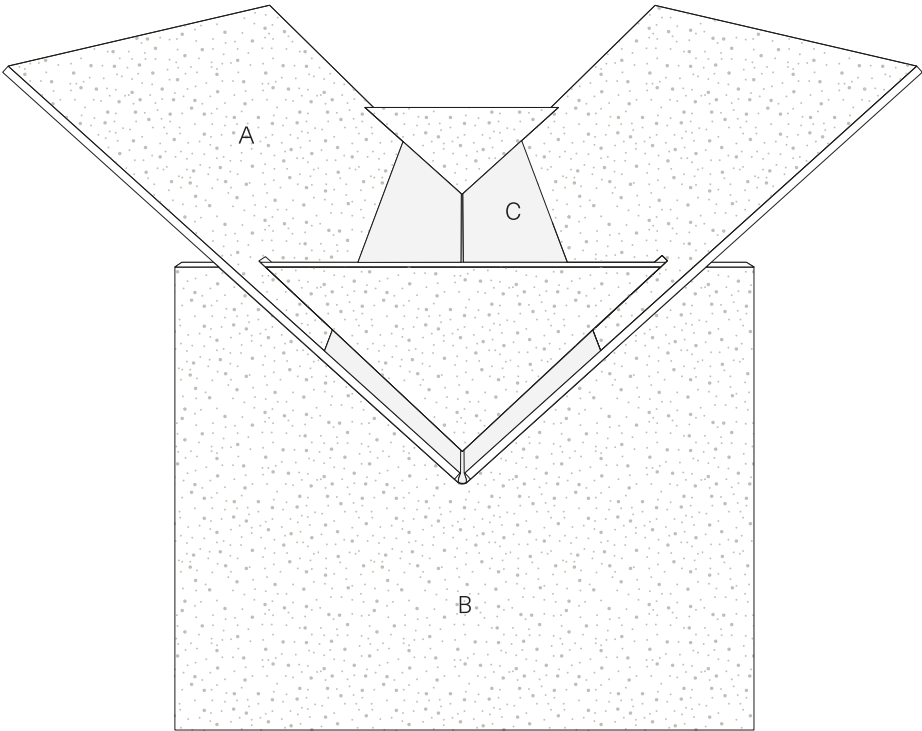


Step-by-Step Punching Cradle for Bookbinding

A punching cradle is very useful when making holes precisely centered on a fold.



You will need

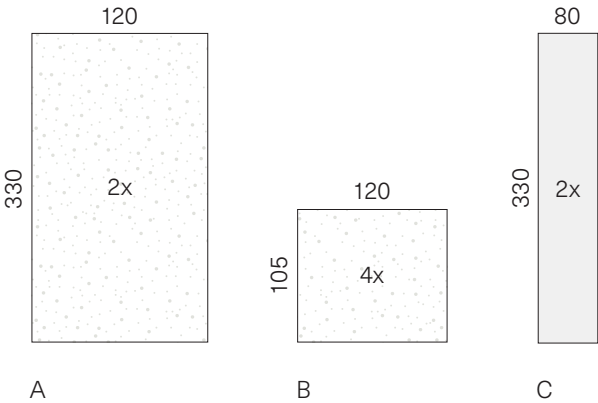
Tools

- Sharp Blade
- Ruler
- Pencil/Eraser
- PVA Glue
- Glue Brush
- Bone Folder
- Scrap Paper

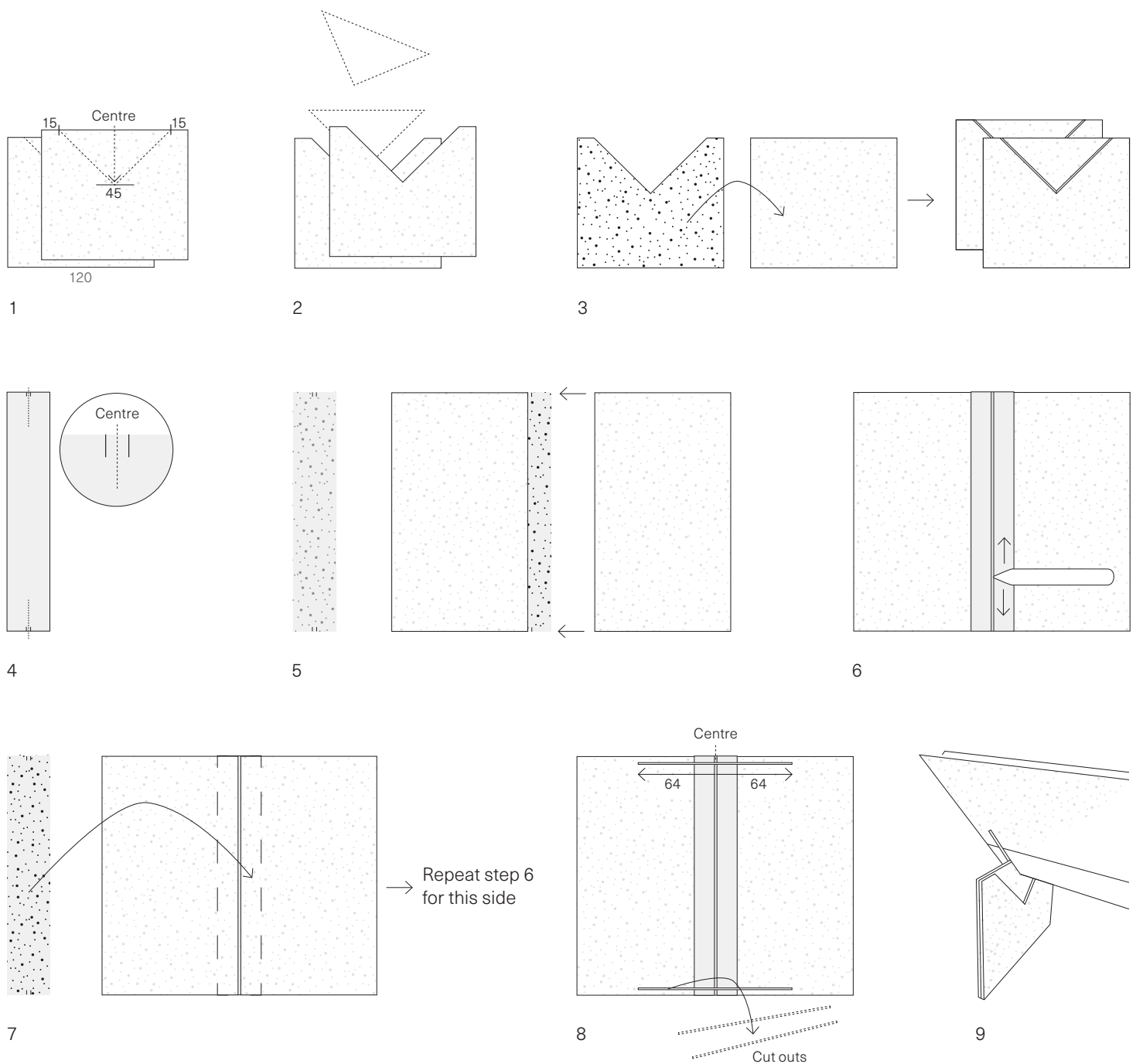
Materials

- A Two large pieces of grey board (2mm/2.5mm thick) for the body of the punching cradle
- B Four small pieces of grey board (same weight) as support legs
- C Two strips of book cloth or tape

This instruction is for an A4 book. Feel free to adjust the dimensions according to the size you need. All measurements are in mm.



Instructions



Once you've cut out the pieces of grey board and book cloth, start with the four small rectangles that support the cradle body.

1 | Draw a triangle on two of the four small rectangles. The triangle should start about 15mm from each corner and the tip should be 45mm away from the top edge.

2 | Cut the triangles out.

3 | Glue each of the remaining grey boards on one of the un-

trimmed rectangles. Then place both pieces under a weight for a short while.

4 | Take one strip of cloth. Mark the centre of the short edge, add two marks, the first, one board thickness to the left from the middle, the second, one board thickness to the right (use the two cut out triangles as a gauge).

5 | Brush the cloth with glue (use scrap paper under it) and attach the long grey boards aligned to your pencil marks.

6 | Take your bone folder, flatten the cloth on the grey boards and score down the middle of the cloth, this will neaten the joint.

7 | Repeat with the other side and align the cloth with the one already attached to the grey boards. After that you can place it under a weight.

8 | Measure and mark up 10mm from the edge of both short sides. Create a slit by cutting the thickness of one grey board (use one of the rectangles as gauge). It should be the exact

thickness, if its too wide the cradle body will be loose). The slit's width should be 128mm in total to fit the support legs.

9 | Almost done, now you can slide each side over the support legs. If necessary, enlarge the slit to fit the cradle body.